

## 标准型

### G系列



G27-10-R1



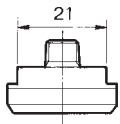
G36-10-01  
(带限制指示器)



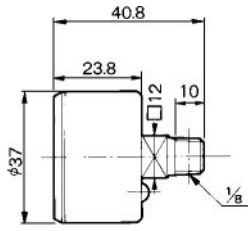
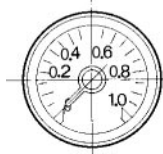
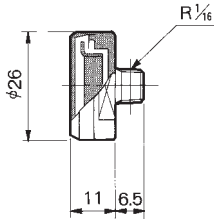
G46-10-02  
(带限制指示器)

型号	最大压力	口径	适合
G27-10-R1	1MPa	R <sub>1/16</sub>	AR10·AW10
G27-20-R1	2MPa	R <sub>1/16</sub>	VBA111 <sub>1</sub> <sup>0</sup>
G36-2-01	0.2MPa	R <sub>1/8</sub>	AR20·25·30 AW20·30
G36-4-01	0.4MPa	R <sub>1/8</sub>	
G36-10-01	1MPa	R <sub>1/8</sub>	
G46-2-02	0.2MPa	R <sub>1/4</sub>	AR40·AR40-06 AR50·60 AW40·AW40-06
G46-4-02	0.4MPa	R <sub>1/4</sub>	
G46-10-02	1MPa	R <sub>1/4</sub>	
G46-15-02	1.5MPa	R <sub>1/4</sub>	

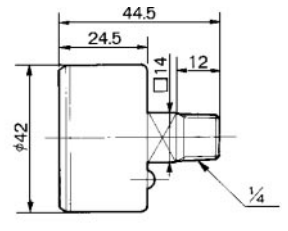
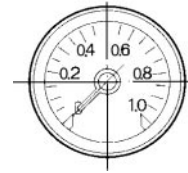
## 外形尺寸图 (毫米)



G27-10-R1



(带限制指示器)  
G36-2-01·G36-4-01  
G36-10-01



(带限制指示器)  
G46-2-02·G46-4-02  
G46-10-02·G46-15-02

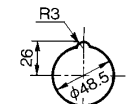
## 面板安装型

### G46 系列

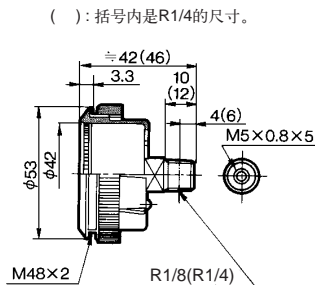
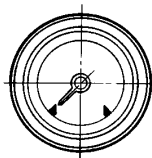
## 外形尺寸图 (毫米)



G46-10-02M-C



面板开孔  
最厚 3.5mm



( ): 括号内是R<sub>1/4</sub>的尺寸。

型号	最大压力	口径
G46-10-01M-C	1MPa	R <sub>1/8</sub>
G46-2-02M-C	0.2MPa	R <sub>1/4</sub>
G46-4-02M-C	0.4MPa	R <sub>1/4</sub>
G46-10-02M-C	1MPa	R <sub>1/4</sub>
G46-15-02M-C	1.5MPa	R <sub>1/4</sub>

注) “M” -带内螺纹M5×0.8。  
“C” -透明罩不突出,不可取下。